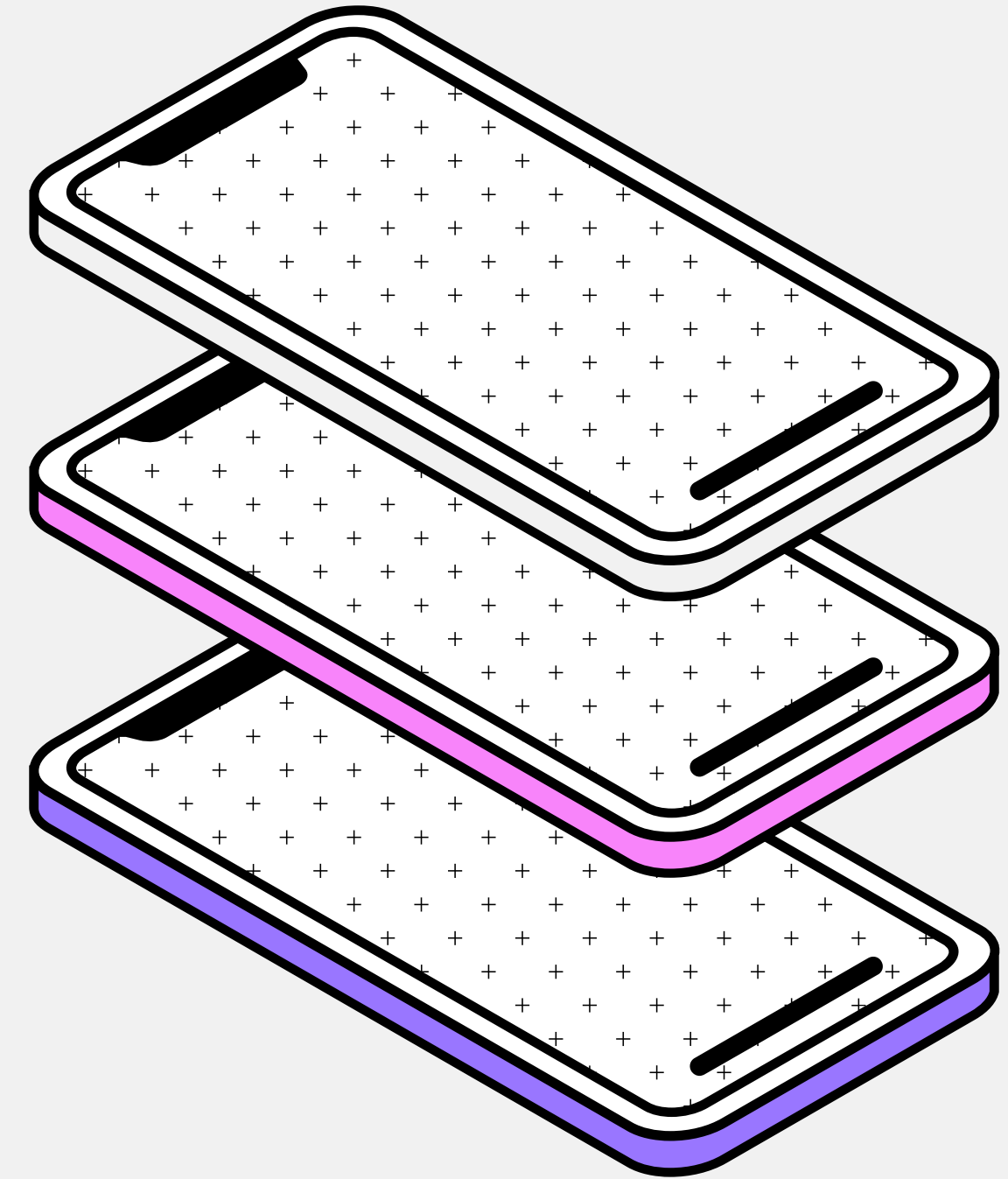


IS RIDESHARING A PUBLIC TRANSPORT MODE?

SAMMEVEI

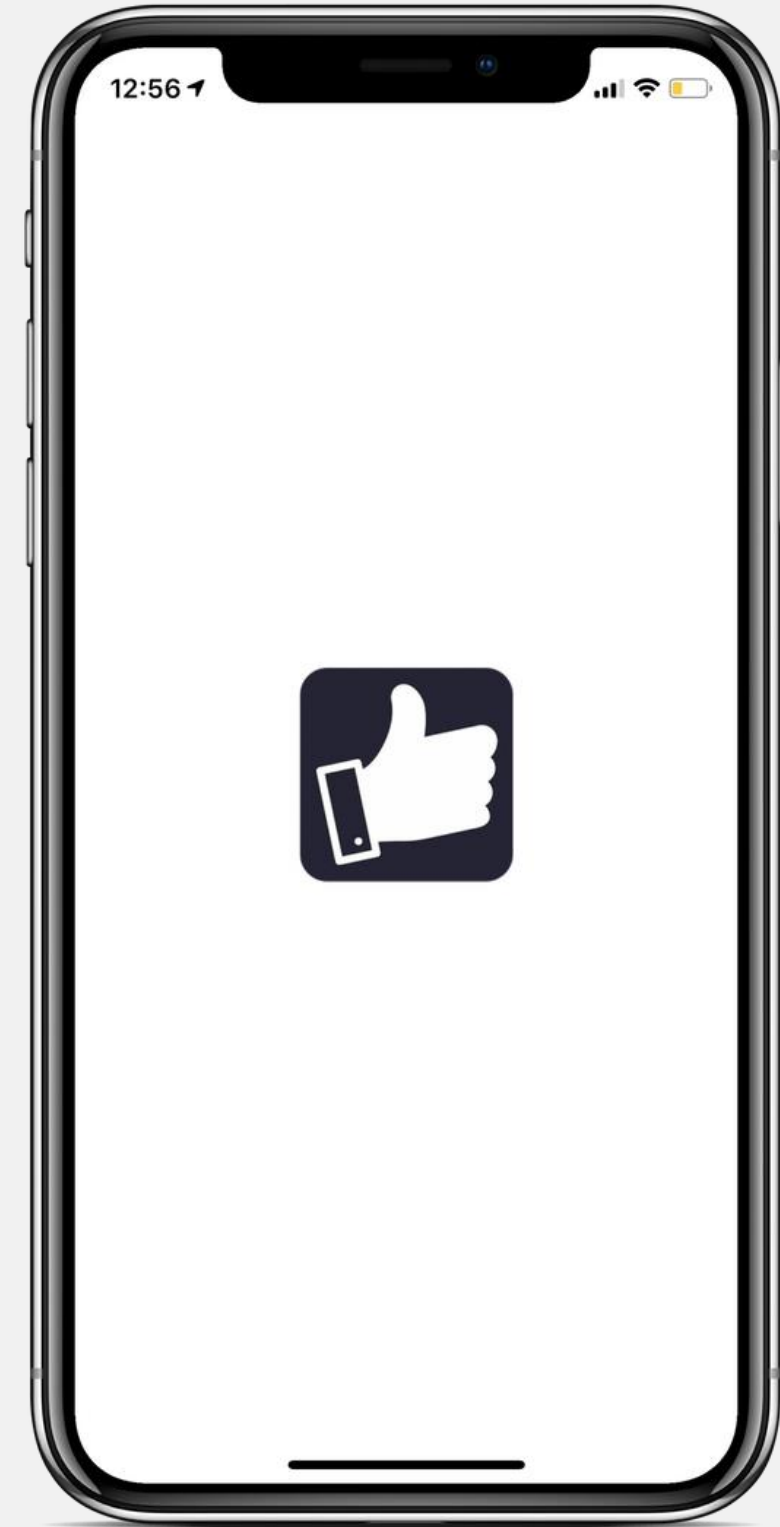


SAMMEVEI

in a nutshell

Tinder of commuting.

Sammevei is a peer-to-peer ridesharing a.k.a. carpooling app that matches drivers and passengers on the same route automatically.



What can you do with Sammevei?

Post your daily and one-off trips

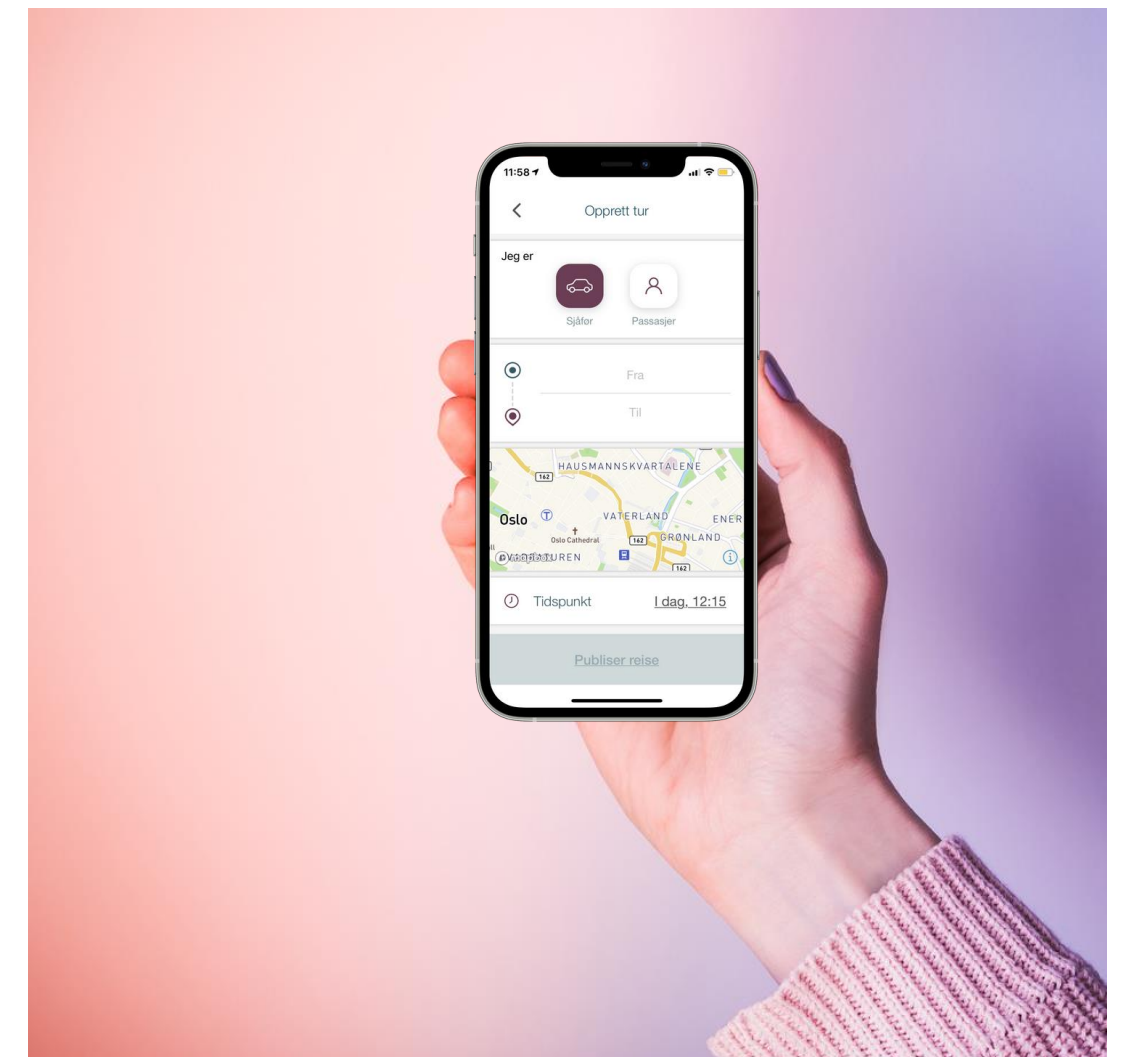
Have an automatic match with a driver/passenger

Pay for the ride via app

Share your rides with a closed group members

Save time, money and environment

Enjoy a nice chat



Before integrating ridesharing

Congested commuting

Higher CO2 emission

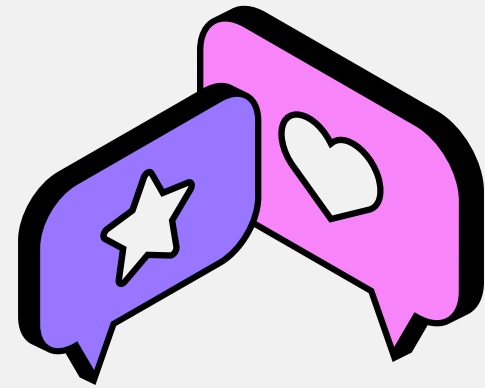
Longer commuting duration

With integrated ridesharing

Less cars, less congestion

Less CO2 emission

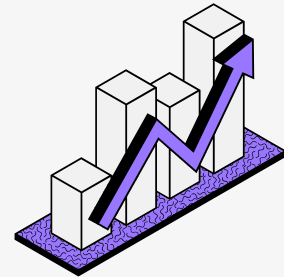
No multiple stops; direct route from A to B



**Sounds good, but can we have it
as a public transport mode?**

Why should we make private car-pool public?

In short: Because it's already costing public money!



27 billion kr.

- **19 billion kr***: The cost of electric car incentives to the state budget. a.k.a. public wallet
- **8 billion kr****: subsidization of public transport (4 big operators)



100 Electric buses

- **150 thousand***** electric cars in Oslo & Viken
- **5000** car passengers if just 3% is carpooling

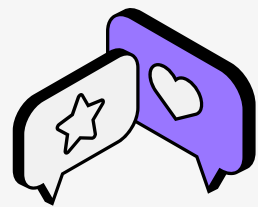
* For elbiler utgjør samlet skattefordel i skatte- og avgiftssystemet 19,2 milliarder kroner i 2020. <https://www.elbil24.no/nyheter/elbilen-far-avgift-fra-2021/72924105>

** <https://e24.no/norsk-oekonomi/i/0nkdaJ/kollektivtransporten-i-storbyene-stoettes-med-milliarder>

*** <https://www.ssb.no/statbank/table/07849/tableViewLayout1/>

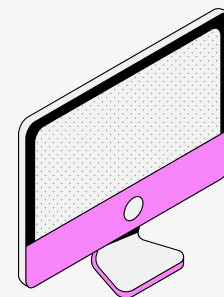
Why public sector should offer ridesharing as a service?

In short: Because every new model needs a strong promoter



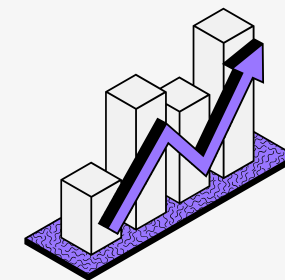
Critical Volume

Peer-to-peer ridesharing is a volume game. Volume means either marketing money or large reach to users. Only a public organization can reach all the relevant people in the audience.



Use Case Selection

For different regional challenges, different mobility solution mix can be offered. Ridesharing can be implemented only, where it makes the most sense.



Economical pilot

No new tech investment is needed, use cases are easy to identify, implementation is economical.

Toughest problems don't need to be solved via **trendy** or **high-tech** innovations

The tech is ready

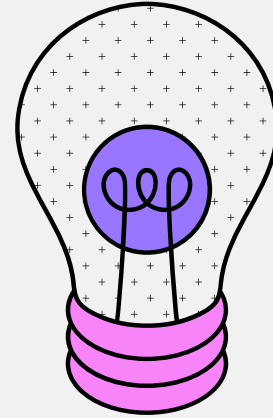
Incentivising ridesharing is more economical

Congestion and CO2 emission can be reduced simultaneously

Self-sufficient communities are sustainable

Demand responsive peer to peer networks are more flexible

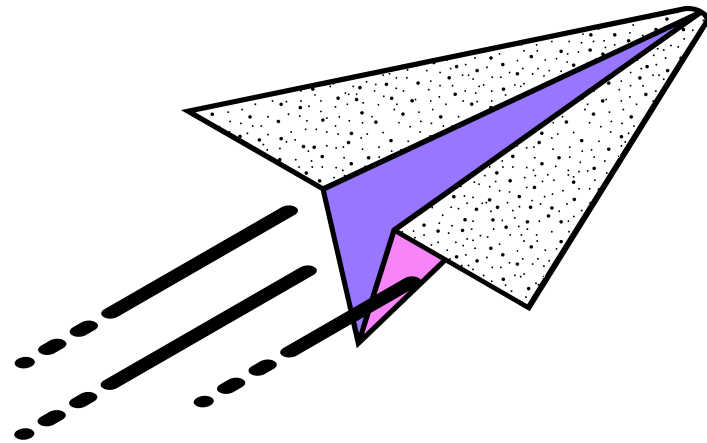




**Public transport should be about
using the most effective resources
that are publicly available.**

SAMMEVEI

Save time, money and the environment



Pelin Hizal Smines

CEO

ps@sammevei.no

+4740851298

